



الطلاءات الزخرفية
DECORATIVE TEXTURED
COATINGS

طلاءات ديكورية للداخلية والخارجية

**PREMIUM
QUALITY
DECORATIVE
COATING**

INTERIOR & EXTERIOR
ATTRACTIVE FINISH
DURABLE
WEATHER RESISTANT
ALKALI & SALT RESISTANT
STRONG ADHESION
ECO FRIENDLY

**Your walls,
our canvass.**





KINGDOM DECORATIVE TEXTURED COATINGS

General Features السمات العامة



EASE OF USE

Kingdom Decorative paints are user-friendly and easy to apply. They have a smooth consistency, making them ideal for both beginners and experienced painters. Achieve a uniform and textured finish on surfaces like concrete, wood, stucco, brick, etc.

LOW ODOR

Kingdom Decorative paints have minimal odor. This makes them more pleasant to work with, especially in indoor spaces.

EASY CLEANUP

You can clean brushes, rollers, and other tools with just soap and water. No need for harsh solvents or chemicals.

WIDE COLOR RANGE

Kingdom Decorative paints & topcoats come in a vast array of colors, allowing you to choose the perfect shade for your project.

DURABILITY & WEATHER RESISTANCE

Kingdom Decorative paints withstand harsh weather conditions, including sun exposure, heavy rain, snow, and temperature fluctuations. It retains its color and protective qualities over time.

AESTHETIC APPEAL

Kingdom Decorative paints add an upscale, modern look to homes and properties. Available in various textures, finishes, and colors, it enhances curb appeal.

SURFACE PROTECTION

The textured finish acts as a protective barrier, preventing moisture, dirt, and mildew from penetrating the surface. Good adhesion properties reduce peeling and cracking.

ENVIRONMENTALLY FRIENDLY

Kingdom Decorative paints have lower levels of VOCs, making them better for the environment and your health.

POWERED BY:



KProtect™ is Kingdom Paints' mark of manufacturing standards and quality protocols.



Kingdom®
TEXTURES

القوام

This premium decorative and protective texture coating, formulated with Acrylic Copolymer and fine aggregates, offers exceptional durability against all weather conditions on interior and exterior surfaces.



Kingdom®
GRAVIATO

جرافياتو

This water-based graffito texture rendering, formulated with acrylic copolymer and hard marble chip aggregates, provides excellent surface protection against harsh weather conditions.



Kingdom®
CANYON

كانيون

Canyon is an acrylic copolymer-based, medium-textured emulsion paint that contains quartz and marble aggregates and pigments. It provides a flexible, tough, and weather-resistant decorative texture coating suitable for both interior and exterior surfaces.



Kingdom®
ASH ANTIQUE

الرماد العتيقة

This two-component decorative coat draws inspiration from classic traditional Arabian houses, creating an appearance reminiscent of mud or clay walls. Customarily applied on exterior walls, it can also be used as an accent texture on interior walls.

Kingdom®

Textures القوام

This grained textured coating is designed to effectively conceal surface imperfections. It comes in soft, medium, and coarse textures, applied via spray and finished with a plastic trowel.

Features:

- High build grained texture.
- Outstanding flexible qualities.
- Extremely tough and durable.
- Excellent weather & UV resistance.
- Vapour permeable allowing substrate to breathe.
- Excellent impact and abrasion resistance.
- Water based and environmentally friendly.

Uses & Application:

- Suitable for interior and exterior applications.
- Disguises substrate imperfections.
- Suitable for application to concrete, cement rendering, concrete, cement fibre boards, stone work, brickwork and blockwork.
- Suitable for use on residential and commercial complexes, low rise shopping centres and hotels.
- Applied by hopper spray gun to create texture build up and finished with a plastic trowel.





Kingdom®

Soft Texture رشة ناعمة

Soft texture paint contains sand-like additives in small grain sizes. It's ideal for creating subtle visual interest and commonly used for interior walls and ceilings for a smoother appearance compared to other textures.

Kingdom®

Medium Texture رشة متوسطة

Medium texture paint has sand-like additives in medium grain sizes. It offers a balanced texture, providing depth without being too pronounced. Suitable for both interior and exterior surfaces on accent walls, facades, garden walls, and other decorative applications.



Kingdom®

Coarse Texture رشة خشنة

Coarse texture paint contains sand-like additives in large grain sizes. Primarily used for exterior walls, it provides a bold, 3-dimensional effect with noticeable texture which is ideal for creating dramatic visual impact on outdoor surfaces.



Kingdom®

Canyon كانيون

Canyon offers a versatile decorative granular finish that can be customized to nearly any color. Applied with either a spray gun or a trowel, it creates a seamless surface. This finish is particularly well-suited for accent features, adding elegance to facades and hotel lobby.

Features:

- A pigmented, filled granular coating.
- Excellent weather and UV resistance.
- Extremely tough and durable.
- Vapour permeable allowing substrate to breathe.
- Provides superior alkali resistance.
- Water based and environmentally friendly.

Uses & Application:

- Suitable for exterior and interior application.
- This product has been developed to withstand extreme hot desert climates as well as extreme cold climates.
- Suitable for application to concrete, cement rendering, concrete, cement fibre boards, sprayplaster, as well as gypsum dry walls and chipboard.
- Suitable for private homes, offices and commercial complexes such as financial institutions & retail centres.
- Applied by steel trowel & finished with a plastic trowel. It can also be spray applied.





کانیون

-  Attractive Appearance
-  Tough & Durable
-  Weather Resistant
-  Alkali Resistant
-  Vapor Permeable
-  Eco Friendly

Kingdom®

Graviato جرافياتو

Graviato is a premium, high build textured coating, giving a rocky scratch finish. It is available in various grain sizes, and can be applied in a vertical, horizontal, cross-hatched or random patterns.

Features:

- A rocky scratch finish.
- Extremely tough and durable.
- Outstanding flexible qualities.
- Excellent impact and abrasion resistance.
- Excellent weather and UV resistance.
- Vapour permeable allowing the substrate to breathe.
- Water based and environmentally friendly.

Uses & Application:

- Suitable for exterior and interior applications.
- Suitable for all types of substrates - rendered surfaces, cement fibre boards, Sprayplaster, concrete, gypsum dry walls and chipboard.
- Used on almost all types of buildings - residential, commercial, leisure, education and more.
- Applied by steel trowel & finished with a plastic trowel.
- Grades: 1.0mm, 2.0mm, 3.0mm.



graviato

graviato



Timeless Beauty That Lasts

Concealing imperfections while revealing a lasting, naturally attractive appearance that seamlessly complements home styles, furnishings, and the surrounding environment.

Graviato's timeless appeal ensures enduring elegance.



A Complement to Modern Spaces

Creating visually-appealing appearance that enhances architectural styles from classic to modern contemporary structures.

Graviato brings new meaning to modern building and construction.



Protection Without Compromise

Graviato is made to withstand extreme weather conditions nature has to offer, keeping your home & property safe & sound.



Caring for the Environment

Safe and nontoxic, Kingdom Graviato uses eco-friendly materials designed for long-term performance without negative health and environmental consequences.

جرافياتو

*The Color Cards shown on this page may not precisely represent the actual paint samples.
For accurate color representation, consider using our color reference books and catalogs available at Kingdom Paints dealers and showrooms.



KPG-2121



KPG-10341



KPG-F-16



KPG-0062



KPG-1249



KPG-9915



KPG-1344



KPG-5021



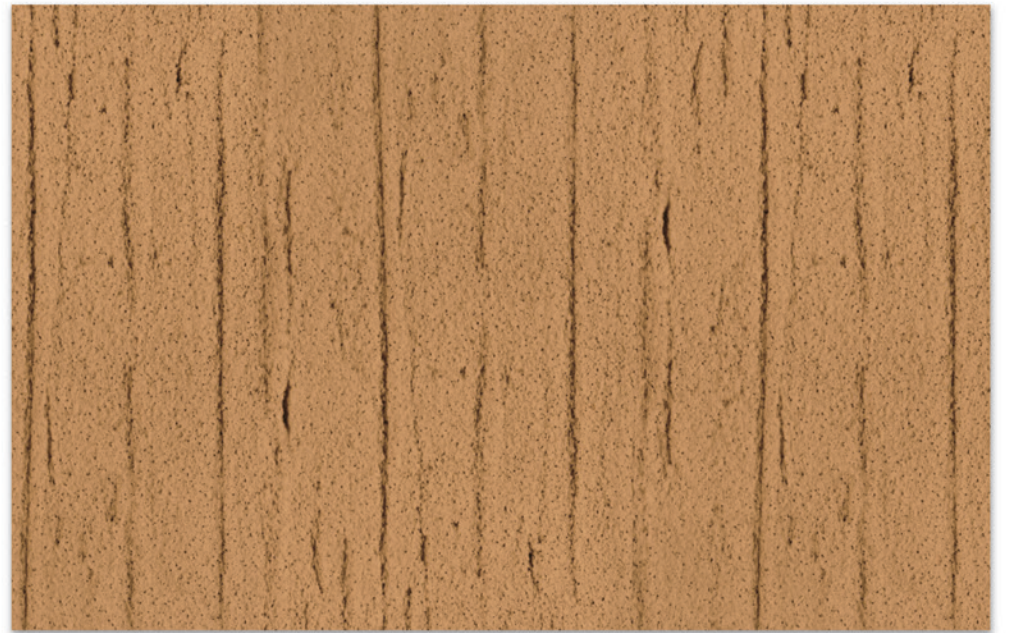
KPG-060/17



KPG-2750



KPG-2210



KPG-2086



KPG-10000



KPG-10831



KPG-0006



KPG-LS-WHITE



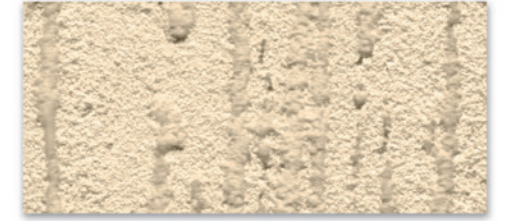
KPG-20520



KPG-21102



KPG-0008



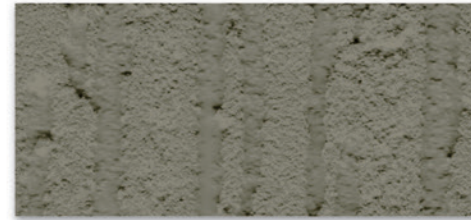
KPG-2222



KPG-2Y740



KPG-20611



KPG-0012



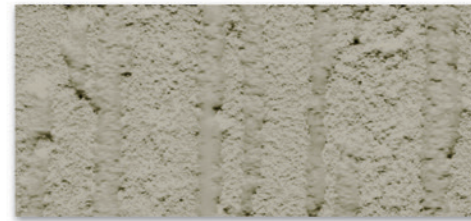
KPG-1221



KPG-2Y450



KPG-5Y061



KPG-0117



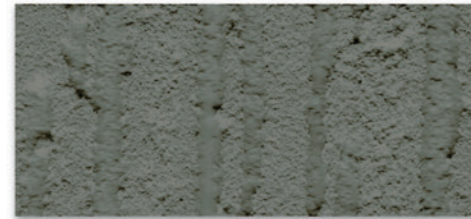
KPG-1201



KPG-2Y402



KPG-2645



KPG-1240



KPG-OFFWHITE

قد لا تمثل بطاقات الألوان المعروضة في هذه الصفحة عينات الطلاء الفعلية بدقة. للحصول على تمثيل دقيق للألوان، فكر في استخدام كتبنا المرجعية وكتالوجاتنا المتوفرة لدى موزعي ومعارض دهانات المملكة.

A photograph of a traditional courtyard. In the foreground, a circular stone well is built with stacked stones and has a wooden log across its top. The courtyard is paved with light-colored bricks. In the background, a building with a textured, light-colored facade and a decorative, scalloped roofline surrounds the courtyard. The building features several windows with intricate metal grilles and a central wooden door. A set of stairs leads to an upper level of the building. The overall scene is bathed in warm, golden light, suggesting late afternoon or early morning.

Preserving Cultural Identity

الحفاظ على الهوية الثقافية



Kingdom®

Ash Antique الرماد العتيقة

Ash Antique is a dual-component decorative finish designed to replicate the charm and texture of traditional clay houses in Saudi Arabia. Its durability allows it to withstand harsh weather conditions, making it suitable for both interior and exterior surfaces.

Features:

- Clay texture finish.
- Extremely tough and durable.
- Excellent adhesion.
- Excellent alkali and salt resistance.
- Excellent weather and UV resistance.
- Water based and environmentally friendly.

Uses & Application:

- Suitable for exterior and interior applications.
- Suitable for concrete, cement and bricks.
- Used on almost all types of buildings - residential, commercial, leisure, education and more.
- Applied manually by hand with gloves.
- Applied according to design and required thickness at a mixing ratio of 1 kg paint : 6 gm treated straw fibers



PRODUCT DATA بيانات المنتج

SOFT TEXTURE

- Packaging size : Packing may vary according to requirements.
- Finish : Matt
- Colours : Available in white & as per color catalog.
- Specific Gravity :
1.7 ± 0.1@ temperature of 25°C, ASTM D - 1475
- Viscosity : High viscous (Thixotropic)
- Solids by volume : 70 ±2 volume%, ASTMD-2697
- Flash point : Non Flammable
- Spreading Rate :2-3 (m²/kg) theoretically on 300µ D.F.T.
(Spreading rate depends on film thickness applied, type of texture, surface porosity, imperfections, temperature, etc.)
- Recommended Dry Film Thickness Per Coat :
Dry film thickness: 300 – 350 microns (µm)
Wet film thickness: 428 – 500 microns (µm)
(Film thickness will vary and is calculated as average.)
- Drying Time: Touch Dry @ 25°C - 1 hour
Hard Dry @ 25°C - 6 hours
- Recommended Primer : Kingdom® Primer Sealer

GRAVIATO

- Packaging size : Packing may vary according to requirements.
- Finish : Matt
- Colours : Available in white & as per color catalog.
- Specific Gravity :
1.8 ± 0.1@ temperature of 25°C, ASTMD - 1475
- Viscosity : High viscous (Thixotropic)
- Solids by volume : 70 ±2 volume%, ASTMD-2697
- Flash point : Non Flammable
- Spreading Rate : 0.27-0.35 (m²/kg) theoretically on 300µ D.F.T.
(Spreading rate depends on film thickness applied, type of texture, surface porosity, imperfections, temperature, etc.)
- VOC : 25g/l (max)
- Drying Time: Touch Dry @ 30°C - 1-2 hours
Hard Dry @ 30°C - 8-10 hours
- Recommended Primer : Kingdom® Primer Sealer

MEDIUM TEXTURE

- Packaging size : Packing may vary according to requirements.
- Finish : Matt
- Colours : Available in white & as per color catalog.
- Specific Gravity :
1.7 ± 0.1@ temperature of 25°C, ASTM D - 1475
- Viscosity : High viscous (Thixotropic)
- Solids by volume : 65 ±2 volume%, ASTMD-2697
- Flash point : Non Flammable
- Spreading Rate :2-4 (m²/kg) theoretically on 300µ D.F.T.
(Spreading rate depends on film thickness applied, type of texture, surface porosity, imperfections, temperature, etc.)
- Recommended Dry Film Thickness Per Coat :
Dry film thickness: 300 – 350 microns (µm)
Wet film thickness: 428 – 500 microns (µm)
(Film thickness will vary and is calculated as average.)
- Drying Time: Touch Dry @ 25°C - 1 hour
Hard Dry @ 25°C - 6 hours
- Recommended Primer : Kingdom® Primer Sealer

CANYON

- Packaging size : Packing may vary according to requirements.
- Finish : Matt
- Colours : Available in white & as per color catalog.
- Specific Gravity :
1.8 ± 0.1@ temperature of 25°C, ASTMD - 1475
- Viscosity : High viscous (Thixotropic)
- Solids by volume : 70 ±2 volume%, ASTMD-2697
- Flash point : Non Flammable
- Spreading Rate : 0.5-0.6 (m²/kg) theoretically on 300µ D.F.T.
(Spreading rate depends on film thickness applied, type of texture, surface porosity, imperfections, temperature, etc.)
- VOC : 25g/l (max)
- Drying Time: Touch Dry @ 30°C - 1-2 hours
Hard Dry @ 30°C - 8-10 hours
- Recommended Primer : Kingdom® Primer Sealer

COARSE TEXTURE

- Packaging size : Packing may vary according to requirements.
- Finish : Matt
- Colours : Available in white & as per color catalog.
- Specific Gravity :
1.7 ± 0.1@ temperature of 25°C, ASTM D - 1475
- Viscosity : High viscous (Thixotropic)
- Solids by volume : 65 ±2 volume%, ASTMD-2697
- Flash point : Non Flammable
- Spreading Rate :2-4 (m²/kg) theoretically on 300µ D.F.T.
(Spreading rate depends on film thickness applied, type of texture, surface porosity, imperfections, temperature, etc.)
- Recommended Dry Film Thickness Per Coat :
Dry film thickness: 300 – 350 microns (µm)
Wet film thickness: 428 – 500 microns (µm)
(Film thickness will vary and is calculated as average.)
- Drying Time: Touch Dry @ 25°C - 1 hour
Hard Dry @ 25°C - 6 hours
- Recommended Primer : Kingdom® Primer Sealer

ASH ANTIQUE

- Packaging size : Packing may vary according to requirements.
- Finish : Matt
- Colours : Available in white & as per color catalog.
- Specific Gravity :
1.64 ± 0.03@ temperature of 25°C, ASTM D - 1475
- Viscosity : High viscous (Thixotropic)
- Solids by volume : 83 ±2 volume%, ASTMD-2697
- Flash point : Non Flammable
- Spreading Rate :1-2 m²/kg theoretically on 400µ D.F.T.
(Spreading rate depends on film thickness applied, type of texture, surface porosity, imperfections, temperature, etc.)
- Recommended Dry Film Thickness Per Coat :
Dry film thickness: 400 – 450 microns (µm)
Wet film thickness: 450 – 500 microns (µm)
- Drying Time: Touch Dry @ 25°C - 2 hours
Hard Dry @ 30°C - 24 hours
- Recommended Primer : Kingdom® Primer Sealer



Manufactured and distributed by:
Kingdom Paints Factory Co., Khamis Mushayt, Saudi Arabia



POWERED BY:



KProtect™ is Kingdom Paints' mark of manufacturing standards and quality protocols.

Copyright © 2024. All Rights Reserved.

To learn more,
visit us @ www.kingdompaints.sa

